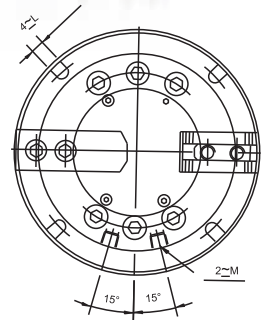
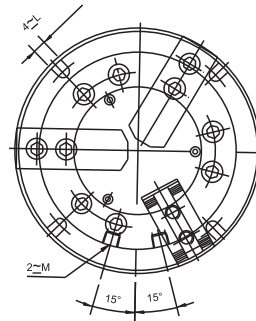
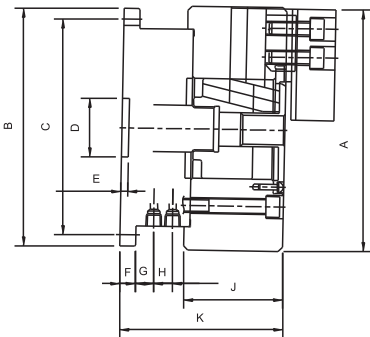


VP SERIES

中實立式夾頭

NON-THRU-HOLE STATIONARY 2/3-JAW POWER CHUCK

- ◎ 立式中實動力夾頭，適合鑽床、銑床或切削中心機使用，有二爪及三爪兩種形式。
- ◎ VP-200型式所配對之夾頭規格及寸法與TL型式相同。
- ◎ VP-300型式所配對之夾頭規格及寸法與T型式相同。
- ◎ It's STATIONARY CHUCKS with two or three jaws for drilling, milling and other machines.
- ◎ Specification and size of matching chuck for model VP-200 is the same as model TL.
- ◎ Specification and size of matching chuck for model VP-300 is the same as model T.



規格 Spec 型號 Model	活塞面積 Eff.piston area cm ²		爪行程 (直徑) (mm) Jaw stroke	最高使用壓力 Mpa(kgf/cm ²)	重量(kg) Weight
	伸側 Extend	拉側 Retract			
VP- 204				2.1(21)	7.1
VP- 304				3.1(31.5)	7.9
VP- 205	28.0	24.9	6.4	2.3(23.3)	10.2
VP- 305				3.5(35)	10.6
VP- 206	63.1	53.5	8.5	2.4(24)	18.3
VP- 306				3.6(36)	19.3
VP- 208	103.4	90.8	8.8	2.0 (20)	31.6
VP- 308				3.0(30)	33.6
VP- 210	153.1	133.5	10.6	1.6(16)	52.8
VP- 310				2.3(23)	54.5
VP- 212	177	153	16	2.0(20)	117
VP- 312				2.8(28)	119
VP- 215	292	275		2.6(26)	160
VP- 315				3.1(31)	165

規格 Spec 型號 Model	A	B	C	D H7	E	F	G	H	J	K	L	M
VP- 204	110						23		52	92		
VP- 304		146	130	30	4.5			26			9	
VP- 205	135					12	23		55	95		PT1/4
VP- 305												
VP- 206	165	178	160				25		74	125		
VP- 306				40							11	
VP- 208	210	205	186		5	14	29		85	140		
VP- 308												
VP- 210	254	248	225	50		17	32	30	89	176	13	
VP- 310												PT3/8
VP- 212	304	375	340	110		23	37		106	206	18	
VP- 312												
VP- 215	381	400	376	130	10	25	40		114	228	22	
VP- 315												

* 保留技術更改的權利，恕不另行通知 Subject to technology changes without prior information
 * 非標需求可訂做 Non-standard requirements can be made